

NAVICARE - Patient-Oriented Health Services Research

Kathrin Gödde^{1,2}, Ute Goerling^{1,3}, Susanne Döpfmer^{1,4}, Bob Siegerink^{1,5}, Liane Schenk^{1,6}, Ulrike Grittner^{1,7}, Hella Fügemann^{1,2}, Christine Holmberg⁸, Nina Rieckmann^{1,2}, Jacqueline Müller Nordhorn⁹

1 Charité - Universitätsmedizin Berlin 2 Institute of Public Health 3 Charité Comprehensive Cancer Center 4 Institute of General Practice and Family Medicine 5 Center for Stroke Research Berlin 6 Institute of Medical Sociology and Rehabilitation Sciences 7 Institute of Biostatistics and Clinical Epidemiology 8 Institute of Social Medicine and Epidemiology, Brandenburg Medical School 9 Bayerisches Krebsregister, Bayerisches Landesamt für Gesundheit und Lebensmittelsicherheit

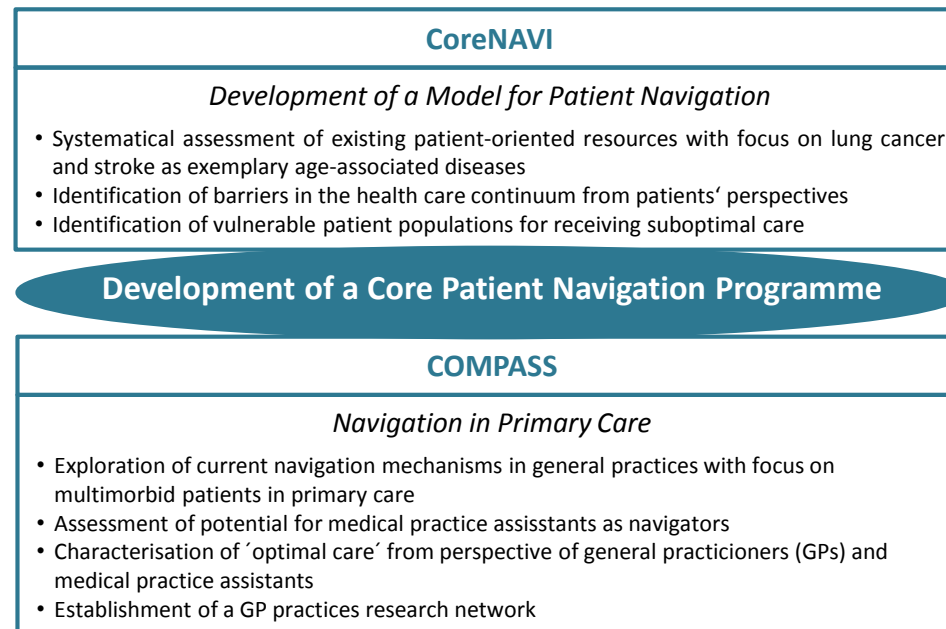
Aims

The mission of the NAVICARE network is to seek fundamental knowledge about the barriers that prevent patients from receiving optimal health care and to develop and systematically study effective, patient-oriented ways to overcome these barriers. The structural aim is to establish a coordinated, active and sustainable regional research network.

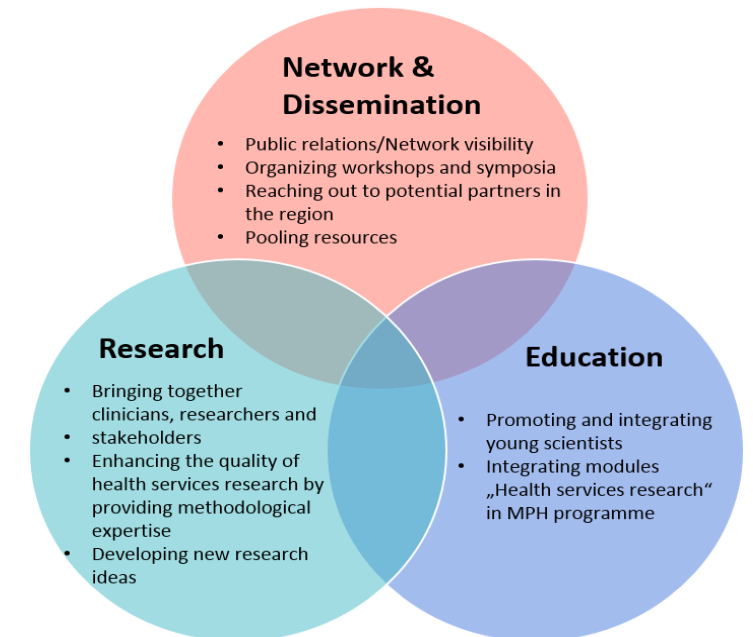
Structure



Research Projects



Working Groups



NAVICARE Network

